

HOLY TRINITY PENN & ST MARGARET'S TYLERS GREEN

BENEFICE PROFILE



PAINTINGS BY PAUL BELL, 2022

CONTENTS

Archdeacon's foreword	3
Introduction	4
Our values and vision	5
Who we are and what we do	6
Church Life	7
Issues and concerns	11
Meet the Team	12
The next five years	13
The Role	14
Our new Vicar	15
Our Churches	16
Parish Boundaries	18
Worship Times	19
Safeguarding	20
Our Community	21
Organisation and Finance	23
The Penn Trust	24
The Vicarage	25
Other Buildings	27
Amersham Deanery	28

FOREWORD

You'll see as you read this profile that this is a healthy benefice whose churches work well together and want to grow, each in their distinctive ways. Their aim is to be "thriving churches where everyone feels welcome and able to engage the Christian faith." The churches are both embedded in their communities and have good contact with local schools, which provides a strong foundation for future mission and ministry.



The churches have begun to rebuild post-Covid and further growth, particularly in families and children's work, will be needed in the next few years. There is a strong ministry team and good, supportive lay leadership in the benefice. The new Vicar will need to be a good team leader and team player who can identify, encourage and enable the gifts and ministries of others.

This is the start of a new chapter for this benefice, building on the good work that has gone before and helping the churches to grow and connect more deeply with their communities.

For a priest who is good at building relationships and will be approachable and visible in the local communities, this role provides many opportunities.

The new Vicar will be committed to the diocesan vision of becoming *a more Christ-like Church for the sake of God's World – contemplative, compassionate and courageous* – and to modelling and enabling a flourishing ministry, for all, in line with the diocesan work in this area.

I commend this profile to you and I would welcome conversations about the role with interested candidates.

Revd Canon Chris Bull,

Associate Archdeacon of Buckingham

PRAYER FOR THE INTERREGNUM

Gracious God, you are with us always.

We thank you for guiding us by your Spirit through our life together as a church.

We pray that we may hear your voice in this time of interregnum; grant us patience, grant us vision and grant us courage as we seek a new priest for our two churches.

And, by your grace, lead us to be a more Christ-like church, a church that is contemplative, compassionate and courageous.

Because we ask this in the name of Jesus Christ, our Lord. Amen.

PRaise ON THE COMMON



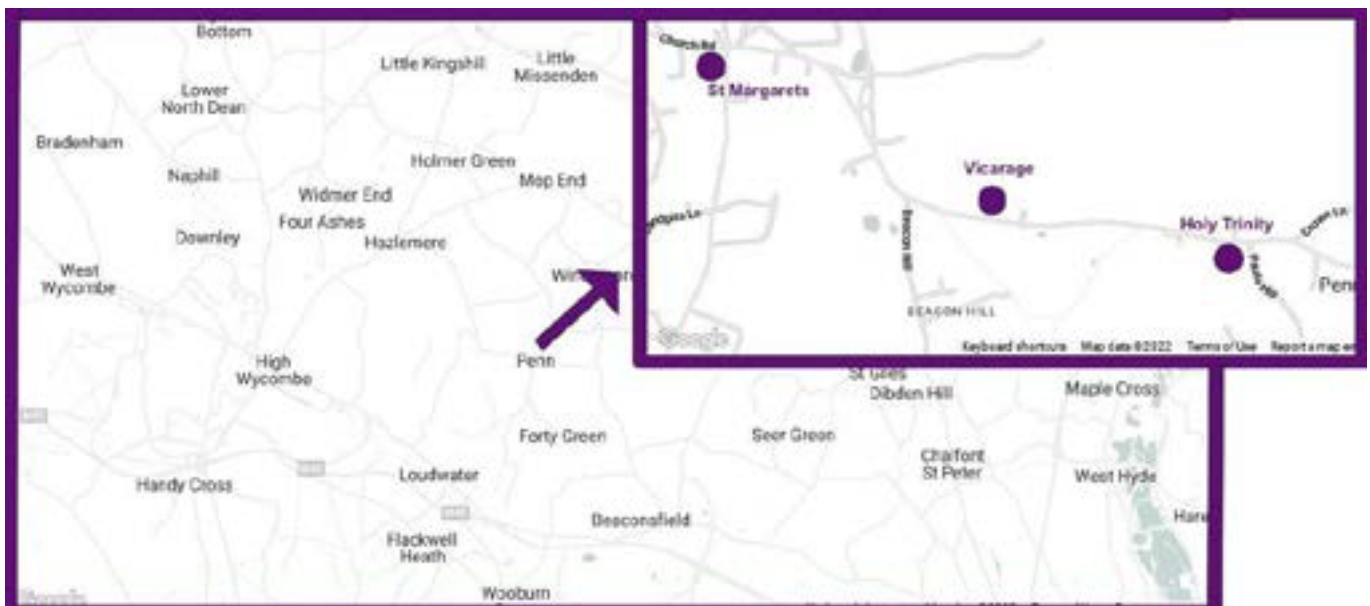
INTRODUCTION

Beautifully positioned on the summit of a Chiltern ridge nearly six hundred feet above sea level, the Parishes of Penn and Tylers Green have a distinctive drawn-out village character. Once you climb up from the neighbouring towns of Beaconsfield or High Wycombe you can appreciate the stunning views across farmland and beech woods within the Chilterns Area of Outstanding Natural Beauty. The location in South Buckinghamshire, with facilities such as fast railway links into central London, the M40 and M25 motorways, and Heathrow airport all within easy reach, mean this is a highly sought-after place to live.

The United Benefice of Penn and Tylers Green came into being in 2003 when the previous incumbent was appointed. Following his retirement in 2022, we now seek a replacement Vicar to carry on the good work of building up the Joint Benefice. Since the creation of the Benefice, the Parishes have maintained their distinct characters whilst uniting in celebrating parish life in its fullest sense through ancillary social and pastoral activities and joint services.

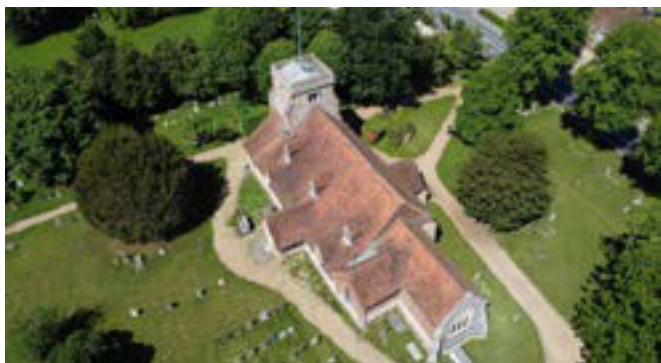
The single stipendiary post of Vicar is supported by a Self-Supporting Minister who trained in the Benefice and two Licensed Lay Ministers and an authorised preacher. A part-time administrator is employed who runs the Benefice office.

Penn and Tylers Green are located in the Amersham Deanery, the Buckingham Archdeaconry and the Diocese of Oxford. Both these attractive churches are structurally in good condition and financially stable.



OUR VALUES AND VISION

As a Christian community, we seek to engage with the world around us and be a place of welcome and acceptance for all on a journey to God – believers, doubters and those who are seeking.



OUR PURPOSE

As a Church ... to worship God and serve our community;

As Individuals ... to love God and serve our neighbours.

“For my house shall be called a house of prayer for all peoples” (Isa 56.7)

“But you are a chosen race, a royal priesthood, a holy nation, God’s own people, in order that you may proclaim the mighty acts of him who called you out of darkness into his marvellous light” (1 Peter 2.9)

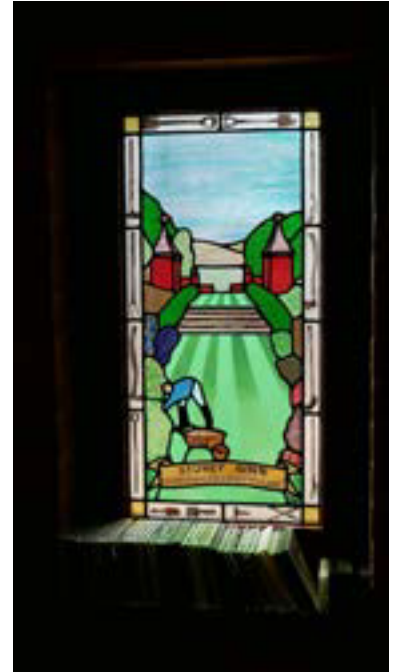


WHO WE ARE AND WHAT WE DO

Benefice Overview

What we celebrate

- A feature of both churches and the village communities are the many individuals who contribute to the life of the church in different ways.
- Many talents are evident amongst church members including spiritual gifts of love, joy, prayerfulness etc. Other gifts are drawn from experience in many walks of life, personal and professional.
- The active community life provides a rich resource of engaged individuals and families. Many are well-disposed towards the church and invested in its continuance and survival. This is a great starting point for outreach.
- Both parishes are in a financially steady position.



What we need to move forward

- **Growth** – a proactive strategy for a clear and healthy path to continued development and spiritual growth.
- **Outward Focus** – to demonstrate continued openness, accessibility and increased visibility in our communities.
- **Relevance** – we need to be more accessible in our interaction within the parishes, particularly for those not familiar, or comfortable, with church.

What we offer

- **Partnership** – you will not be alone. We commit to supporting you in this ministry, not only in church work, but by enabling and fully endorsing the work-life balance and a need for family life.
- **Resources** – well-equipped churches in good condition.
- **Acceptance** – there is openness, desire and support from members from all age groups to change, evolve and grow.
- **Hope** – a fully energised and fresh hope for the future.

Nineteen years ago, when our previous Vicar joined us, the churches were not a United Benefice, and there were no community events, such as school visits.

Over the past 19 years there has been a lot of success, starting of course with the relationship building of a United Benefice. With this, the two churches built up good pastoral teams, a joint churches Events Committee and children's groups developed further, including a parent and toddler session each week. This is in addition to building links with the local schools and residential care homes within the area.

CHURCH LIFE

Our two churches work well as independent churches offering the community both traditional and modern services across the churches.

Each church offers peaceful and calming spaces for the community, with St. Margaret's in the heart of the village and Holy Trinity a short walk away. Both churches lie within a half mile's easy walk from the Vicarage.

There are regular shared events to engage both churches, such as sharing lunches, pancake parties, and in previous years Alpha courses. An Events Committee plans and organises a cross section of events for the Benefice.

Within St. Margaret's, the Tygre Club is our Sunday school. This over the years has been very popular with, at one stage, three groups running. As with a lot of things due to children growing up and Covid, this has now dwindled, but with faith and support we still have a small team to lead our Sunday school and we continue to look to grow this again.

Holy Trinity has a group of bell ringers that meet each Monday to practise ready to ring out our six bells each Sunday morning. Bell ringers from an area-wide team also ring at irregular services, including our wedding services.

We enjoy the local schools, scouts and nursery children visiting our churches especially at Christmas and the Vicar returns these visits to them and participates in school Assemblies and visits.

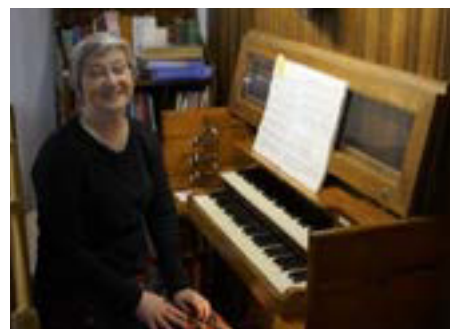
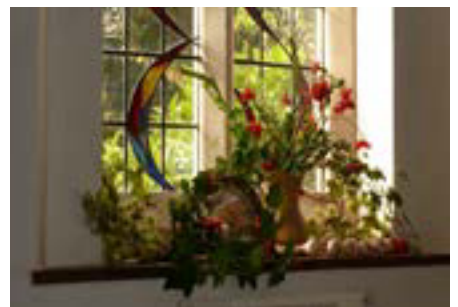
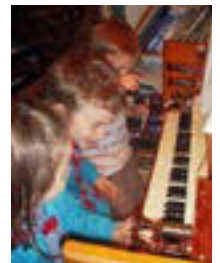
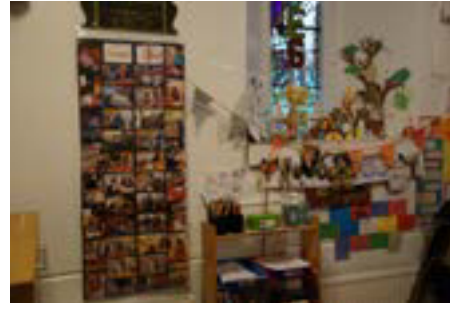
We publish a Parish newsletter on a regular basis. 3,500 A4-size colour copies are delivered to all the homes in the Benefice by a mighty team of deliverers from each church. The latest issue can be seen here: <https://tinyurl.com/2n2h7tft>

St. Margaret's live-streams many of its services and provides an audio link through its Facebook page and via the Benefice website. A credit card reader has recently been installed to enable the congregation to make direct online contributions, and this has been particularly useful at baptisms and for the community who do not attend church on a regular basis.

Both churches are fortunate to have organists for the main services who play our well-maintained organs. At each church there is also a committed team of flower arrangers creating weekly displays and also on special occasions, such as Harvest and Christmas, extending the floral decorations to all the church windows.

Pre-Covid there were a number of well-established home groups; some of these have since re-started but others have been unable to do so.

A parent and toddlers group was held each week in the Parish Rooms; sadly this stopped over Covid and is yet to be restarted.





The Lighthouse Team

St. Margaret's congregation, in particular, have been active participants supporting our local Lighthouse. Lighthouse is a non-residential week-long holiday club for children run by Christians from a collection of our local churches. It is an opportunity for children from 5-11 years of age, from all walks of life and abilities to encounter God in a fun-filled week with teaching, sport, craft, performing arts and music. Lighthouse is staffed and run entirely by volunteers, with usually approx. 20 volunteers supporting our local Hazlemere Lighthouse. <https://lighthousecentral.org>



Harvest Supper

Outreach activities include a Harvest Supper which in pre Covid times would attract upward of 150 people from within the churches and the community.



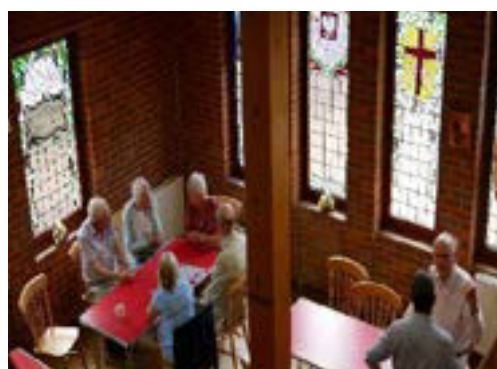
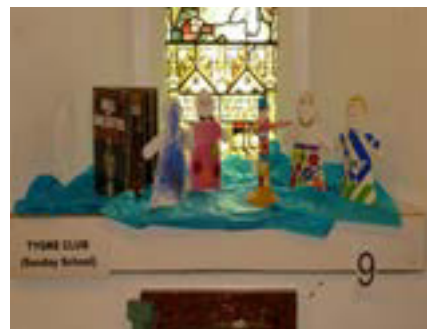
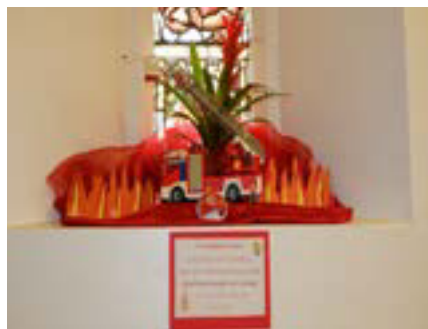
There has been a popular Christmas Tree Festival every December held at Holy Trinity, with church and local community groups taking part and displaying some creative trees. It raises money for a local charity and visitors vote for the best dressed tree.

Holy Trinity also participates in the national Heritage Weekend, opening the Bell Tower and having our own local historians on hand to share the story of Holy Trinity, with of course tea and cake on hand too!



We have an annual pet service, with an array of pets coming along to Holy Trinity. It is an interactive service for sure!

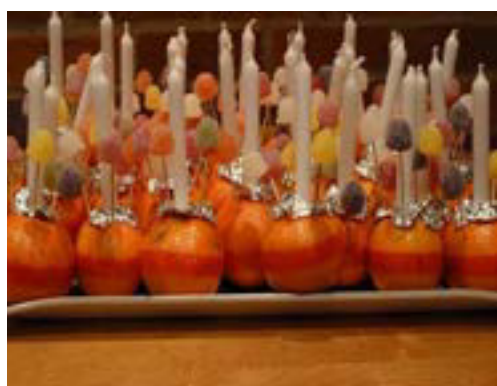
Open Gardens is another annual event in the village, with the Sanctuary being a 'Tea and coffee' stop along the route as well as opening up St. Margaret's and decorating the windows.



Coffee is served each Tuesday morning at The Sanctuary, an event for both the congregation and the community to come together, and there are many walking groups that will finish their walk here each week. This is run by a team of willing volunteers each week from the church.



Over the month there is a monthly pub lunch, as well as evening 'meet-ups' which take place. We organise walks, with the favourite being on Easter Monday where we end up at one of the lovely local pubs in the neighbouring village of Penn Street.



Christmas is of course a busy time in our churches. We have local schools and nurseries visit for Christmas services and Carol services, and of course Nativity services (with a slight twist!). Both churches take part in Operation Christmas Child, the Samaritans' shoebox scheme, with on average 50 filled shoeboxes being collected and sent to children in Europe.

We have recently redesigned our Benefice website and add our news sheet and services to it each week. <https://holytrinityandstmargarets.co.uk/>

The Benefice is a vibrant place with an active community, and this leads to many opportunities for both churches to grow and offer something to everyone.

There is lots of potential for new and exciting projects as well as nurturing our existing church family.



ISSUES AND CONCERNS

Following our consultations with the congregation and community during the interregnum, we received this feedback when reflecting on the issues and concerns for the Benefice.

- The churches are still in recovery from Covid and Lockdown and this is going to take some encouragement and outreach to those who still feel apprehensive.
- Holy Trinity has an ageing and slowly shrinking congregation, in common with much of the Church of England, diminishing numbers attending church and an older age range of congregation would appear to be the main challenges.
- St. Margaret's has a larger, younger congregation but many children have not returned to church since Covid, and we need to encourage young families to come and be part of the fellowship.
- Attendance also has an impact on our finances; along with the increase in the cost of living that we are all experiencing.
- There is a need for the revival of Pastoral Care, Home groups, Services for Children and Young People. These are all activities that had been vibrant and blossoming pre Covid, so time, encouragement and effort is needed to reignite these again.
- A bold and creative communication strategy is needed to refresh and reinforce connection with the local community and move forwards with our mission.
- The Benefice has a Facebook page at <https://www.facebook.com/HolyTrinityandStMargarets> which needs to be included in our communication strategy.
- The inhabitants of Forty Green and Knotty Green tend to see Beaconsfield churches as their natural place to attend church, although they are within the Parish of Holy Trinity Penn. An awareness campaign is needed.
- We all need to remember that God is here, he is present in Tylers Green and Penn. Our job is to make him visible.



MEET THE TEAM



Rev'd. Graham Summers - Associate Priest

Prior to his call to ministry, Revd. Graham worshipped at St. Margaret's with his family and worked as a tax accountant in the City of London. Graham was ordained Deacon on the 4th July 2015 by the Bishop of Buckingham at Christ Church Cathedral and is part of the ministry team at St. Margaret's and Holy Trinity. He is supported by his long suffering wife, Corrine (who coordinates weddings at St. Margaret's and Holy Trinity and looks after the flowers at St. Margaret's), and his grown up son Matthew. Apart from faith, family, gardening and Brentford FC, Graham's other main passion is for all things cricket.



David Carter - Licensed Lay Minister

After taking his degree in Chemistry and a Diploma of Education, David entered the Teaching Profession and taught in London, Lincolnshire, Hampshire, and in Buckinghamshire he served as a Deputy and a Head Teacher. He completed his course as a Licensed Lay Minister in 1992 and has since become involved in the training of Lay and Ordained ministers in the Diocese of Oxford. He is currently an Assessor of Curates in the diocese.



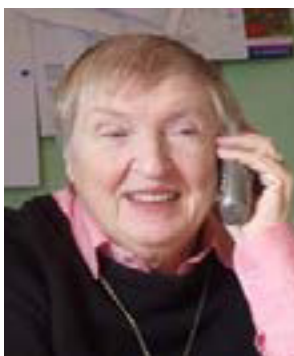
Mary Lee - Licensed Lay Minister

Mary has been a parishioner at Holy Trinity since 1984 engaging in various roles and since 2014 has been licensed as a Reader (known as Licensed Lay Ministers in the Diocese of Oxford) and is a full participant of the Benefice Ministry team. A solicitor, she is married with two grown-up daughters and three granddaughters and enjoys walking round the Chilterns with her family. Other interests include playing the piano and listening to an eclectic range of music and she has recently revived her knitting skills.



Annette Bruce - Authorised Preacher

Annette has been a member of the congregation at Holy Trinity for about thirty years. She is married and works as a Reception class teacher and Deputy Head. She started helping out with family services at church during the previous interregnum and subsequently trained to become an authorised preacher about five years ago. The Bishop authorised her to preach some three years ago.



Gail Wellings - Parish Administrator

Gail grew up in London and after "A" Levels went to Secretarial College, working for Marks and Spencer for 14 years as Secretary to the Chairman. She moved to Arizona with her husband for business reasons. Returning to the U.K., once her daughter was at University. Her daughter, son in law and three grandchildren still live in the U.S.A. She has worked in the Benefice since 2007.

THE NEXT FIVE YEARS

Opportunities and challenges

Reviewing activities and numbers pre-pandemic times, it can be seen we had lots of opportunities in our Benefice and community, and the challenge is to reconnect with these and drive this forward creating vibrant and overflowing pews!

Priorities

This vacancy is an opportunity for the two churches to develop different but complementary ministries within the same family. Going forward, Holy Trinity could establish itself as being liturgically based in ancient and modern styles. It could also be further developed as a venue for wider appropriate cultural activities which will help people to get used to the building, so they are not uncomfortable when they come there for Christian content.

St. Margaret's on the other hand, could be developed into a more informal style of community and this is where the main areas of church growth tends to be at the moment.

As well as the present faithful parishioners we need to engage younger people and get families attending with a broad mix of people, developing a well-mixed congregation with many different ages. We have the opportunity to develop our use of technology within the services where appropriate as well as with the younger generations, encouraging them not just to participate passively but take part in the services in a proactive way, such as reading, prayers, leading, teaching, with not one worship style dominating.

Our aim is to have thriving churches where everyone feels welcome and able to engage the Christian faith. The creation of live worship bands and lively choirs will bring worship to life for some of the congregation. We also need to rebuild our pastoral care for the congregation and wider community Mission and outreach.

From the consultation process with our congregation and wider community we have concluded the following:

What matters is that we all enjoy being a Church together, and we understand where we are going and how we are making the Kingdom of God visible here in our Benefice. Both our churches remain an integral part of the community, and we have the opportunity to embed and develop our current links within this community as well as creating new bonds and strong ties.

There are opportunities to partner more widely with other churches e.g. youth provision or the Art group and thus promote these activities through other churches.

As noted earlier, outreach needs to include social media and the active involvement of the Ministry Team in e.g. our Facebook page. Social media platforms should enable us to reach a large part of our community that we are not currently engaging with.

THE ROLE

We seek a priest who:

- will help us shape our mission and discipleship for the future;
- will help us to identify and develop our gifts and ministries;
- is comfortable leading worship in a variety of styles;
- will help us develop our links and relationship with our community.

We offer:

- a welcoming church family, prayer, friendship, fellowship;
- a comfortable 4-bedroom Vicarage;
- an active community in a very desirable setting.



OUR NEW VICAR

Candidate's Love for God

The successful candidate will:

- show a vibrant faith that can speak about their own joys and disappointments, experience of change or failure and will be able to interpret how grace is at work in their life;

Ministry

The successful candidate will:

- speak of the joys and challenges of ministry, and the way in which ministry has promoted their flourishing and their developing relationship with Christ, whilst being able to speak honestly when this has been hard;

Candidate's Love for people

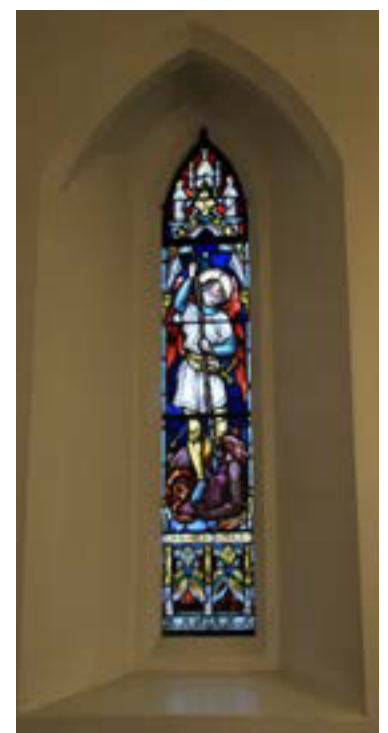
The successful candidate will:

- demonstrate empathy and wisdom in pastoral relationships with a wide range of people and demonstrate good listening skills in relationships with those inside and outside the church, including their own colleagues;
- show an ability to put others at their ease in a range of settings demonstrating compassion and will articulate the importance of Safeguarding and demonstrate good practice in managing the care of children and vulnerable adults;
- motivate, educate, inspire, and delegate with management skills; to ensure responsible financial direction;
- be someone who is conscious of the responsibility for a sensitive historical setting.

Candidate's fruitfulness in ministry

The successful candidate will:

- communicate faith and practice in a variety of ways, with sensitivity to their audience and will speak with confidence and infectious enthusiasm about their own journey of faith and discipleship;
- provide evidence of their ability to prioritise under pressure and, where appropriate, to delegate tasks to others.



OUR CHURCHES

The Parish of Penn has been in the patronage of Earl Howe since the time of Edward VI. The present holder of the office takes an active interest in the Parishes and selection of its Vicar.

Brief history of Holy Trinity

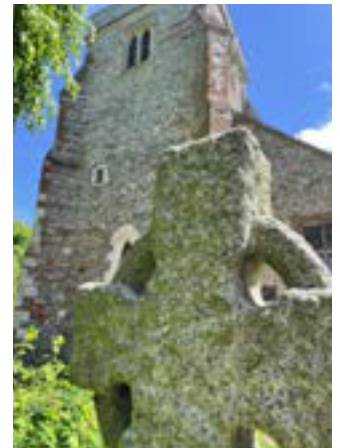
The Parish Church of Holy Trinity, Penn is an attractive old flint church, the only Grade I Listed building in the Benefice. John Betjeman observed that 'within and without, the church has the charm of old watercolours.'

People often ask how old it is and the answer does depend on which part you are looking at.

Every generation for over 800 years has left its mark in a medley of styles and the church has changed and grown over the centuries.

It is the remarkable testament of our many predecessors; a history of England recorded by a country parish church, illustrating the changing beliefs, fortunes and fashions of successive generations.

The church is situated on the highest spot of ground closest to the former manor house and an earlier Vicar recorded that he had seen the date 1177 on a foundation stone under the chancel.



The 15th-century Doom painting of the last judgement above the chancel arch is one of only five surviving wooden tympanums in the country having been discovered in 1938 under whitewash.



OUR CHURCHES

Brief history of St. Margaret's

During the 19th Century new parishes were created and new churches built to cope with the growth and shifts of population.

The building of St. Margaret's Church was entirely the result of the efforts of the then future Sir Philip Rose, a young, ambitious solicitor, who effectively created the Parish of Tylers Green.

The builder was Zachariah Wheeler, a local man, and his walls were built of flint from Common Wood and sand from Tylers Green Common.

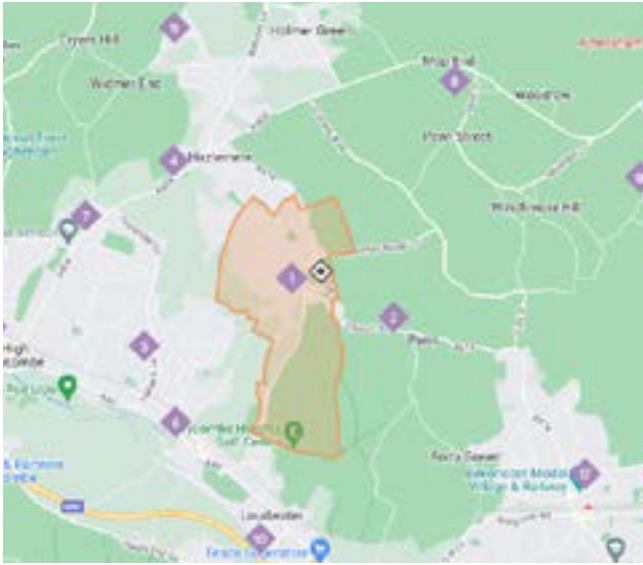
The foundation stone was laid on 8 October 1853 and the church was consecrated a year later.

Over the years that followed the church was embellished, particularly with stained glass windows. In the first half of the 20th century new vestries were built and the chancel was extended with new choir stalls and a new east window.

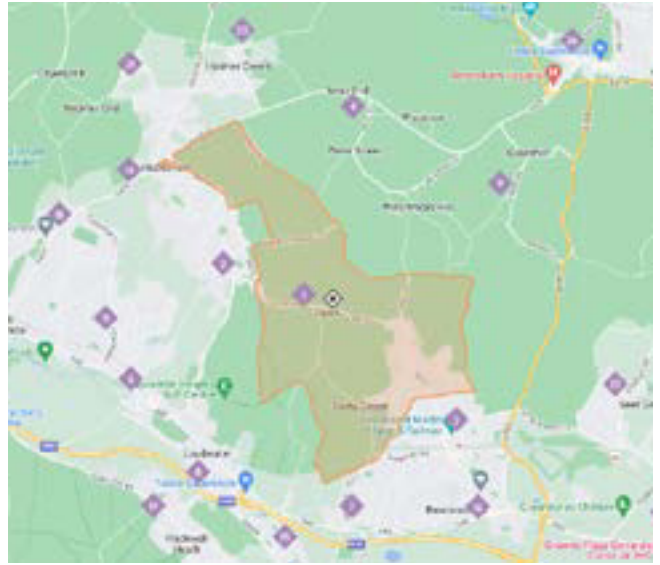
More detail about the churches can be found on the Penn Heritage Website: www.pennchurch.uk



PARISH BOUNDARIES



Tylers Green



Penn

CHURCHYARDS

Holy Trinity Churchyard remains open with the current burial area in a section called “the Vineyard”. A faculty has been granted for a further area of the churchyard to be re-used for burials in the future once the Vineyard area is full. In addition there is considerable space for interment of ashes.

St. Margaret’s Churchyard is closed.



WORSHIP TIMES

8.00am BCP Holy Communion at Holy Trinity

9.30am Parish Communion or Morning Worship at St. Margaret's (all Common Worship)

10.00am BCP Holy Communion, first Thursday of the month at Holy Trinity

11.00am Parish Communion or Morning Worship at Holy Trinity (all Common Worship)

Statistics for Parish Profile

Parish	Usual Sunday attendance	Attendance	Attendance	Electoral roll	Electoral roll	Electoral roll
Year	2019	2020	2021	2019	2020	2021
HTP	42	80	54	120	118	116
STMTG	127	120	85	83	73	73

Baptisms Weddings Funerals

Parish	Baptisms			Marriages			Funerals		
	2019	2020	2021	2019	2020	2021	2019	2020	2021
HTP	12	0	2	3	1	3	13	9	20
STMTG	12	1	9	1	1	3	19	13	24



SAFEGUARDING

Each church has its own appointed Parish Safeguarding Officer. Using Diocesan guidance and the Parish dashboard the Parish Safeguarding Officers maintain the day to day requirements, including DBS checks, paperwork and safeguarding training for each church.

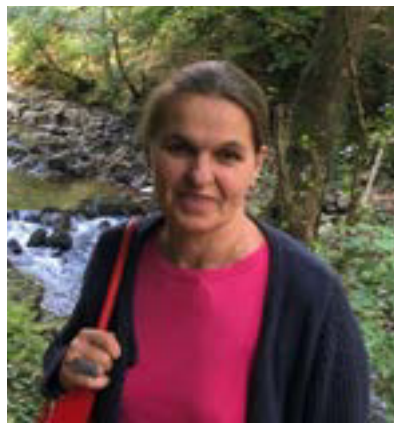
Safeguarding is always on the PCC agenda and both officers play a proactive role within each church to maintain the safeguarding profile.

Each Parish completes tasks on the dashboard, maintaining a 'green' light on the system, with policies and documents reviewed.

Risk assessments have been completed for the church activities in place and approved and shared with the PCC.



Hilary Forbes
*Parish Safeguarding Officer
for Holy Trinity*

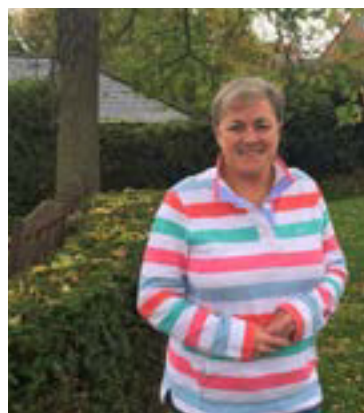


Emma Byrne
*Parish Safeguarding Officer
for St. Margaret's*

CHURCH WARDENS



Paul Ricketts and Oliver Heal



Kathryn Grudgings



David Carter

OUR COMMUNITY

Most people consider themselves very fortunate to live in such a vibrant community but it is not without its issues. To get an idea of current activities and issues, look at our bi-monthly magazine “Village Voice” which can be found on the Penn & Tylers Green Residents’ Society website at www.pennandtylersgreen.org.uk. Please note that this magazine covers Tylers Green and the hamlet of Penn and does not cover that part of Penn Parish that lies in North Beaconsfield.

- The Benefice of Holy Trinity Penn and St. Margaret’s is set in a beautiful area of the Chilterns and enjoys a healthy environment, good housing and employment, and good transport links to London and the rest of the country.
- The closeness of London brings benefits via commuting, but also higher property prices.
- There is a huge differential between wealth and poverty in the Benefice and some surrounding areas.
- There is considerable pressure from expansionist plans for property development, together with the associated stress on all forms of infrastructure and local services and transport.
- The two churches are different in architecture and history and can therefore offer a wide range of services and worship experiences.

There are four links which give the history, social geography, and neighbourhood plans for Penn and Tylers Green. These links are given below. (You will see that some of these are work in progress, but they provide much current information.)

1. History and Architecture of the Penn and Tylers Green Conservation Area by Miles Green

<https://www.wycombe.gov.uk/uploads/public/documents/Planning/Conservation-areas-and-listed-buildings/History-of-Penn-and-Tylers-Green.pdf>

2. Tylers Green- From Wikipedia

https://en.wikipedia.org/wiki/Tylers_Green

3. Penn Parish Population Statistics, Charts, Maps, and location

https://www.citypopulation.de/en/uk/southeastengland/admin/buckinghamshire/E04001576_penn/

4. Penn Parish Neighbourhood Plan

<https://www.pennparish.org.uk/neighbourhoodplan.htm>

SCHOOLS

Within the Benefice of Tylers Green and Penn there are two popular village schools:

Tylers Green Infant school, accommodating reception through to year 2.

<https://www.tylersgreenfirst.co.uk>

Tylers Green Middle school which takes children from years 3-6.

<https://www.tylersgreenmiddle.bucks.sch.uk/>.

Parents with younger children will find two independent nurseries within Tylers Green, as well as many other day nurseries in the local vicinity.

Parents with older children have a variety of Secondary schools to choose from within the local area. Buckinghamshire operates the 11+ scheme and there are excellent Grammar and Secondary schools within the local area as well as private education options.

There really is something for everyone who has a child moving to the area.

Alfriston School at Knotty Green caters for girls with a wide range of special educational needs and disabilities.

CARE HOMES

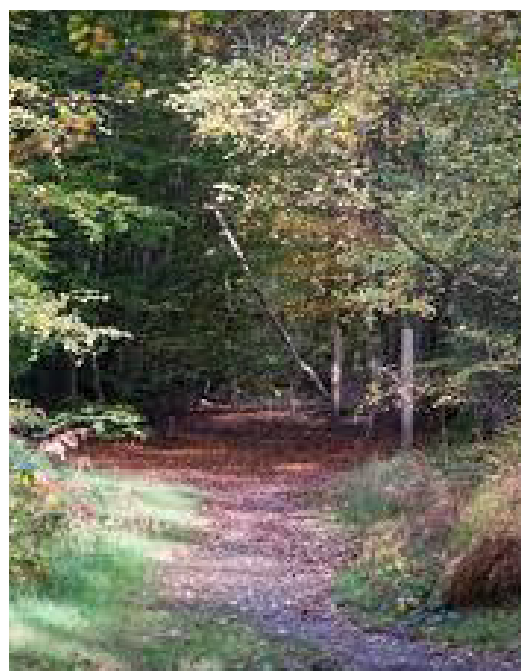
At the other end of the age-scale we maintain close contact with the old people's homes, Alde House and Bury Lodge, where we hold weekly worship services.



Alde House

OTHER DENOMINATIONS

Other Churches within the parish include Tylers Green Methodist Church, Penn Free Methodists, and Tylers Green Chapel. We have a good relationship with Tylers Green Methodist Church which extends to occasional joint projects such as our annual open air service on the common.



Common Wood

COMMUNITY GROUPS

There are many community groups and clubs including a very active Penn and Tylers Green Residents' Society. It publishes the magazine, Village Voice, which appears six times a year. Village Voice is distributed to residents and contains a column contributed by the Vicar entitled Church News.

<https://pennandtylersgreen.org.uk/>

<https://www.facebook.com/profile.php?id=100064457091519>

ORGANISATION AND FINANCE

Both parishes have regular PCC meetings with usually 5 meetings a year each with our meetings being both proactive and supportive to those involved in the PCC. Each PCC meeting is chaired by the Vicar.

The Holy Trinity PCC currently has 11 members plus the Honorary Treasurer, the Honorary Archivist, and PCC secretary who are co-opted members. The Parish Safeguarding Officer is one of the 11 members. St. Margaret's PCC has 10 Members including posts of Secretary, Treasurer, and Parish Safeguarding Officer and Deanery Synod representative.

Both PCCs support local and international charities and on a yearly basis following consultation with the PCC donations are made. Among those charities we have previously supported were "Lighthouse", our local Christian holiday club, Sharon International, Wycombe Homeless Connection and Open Doors.

Financial Statistics all figures £000

HTP				STMTG			
Income and Expenditure	2019	2020	2021	Inc and Exp	2019	2020	2021
Income	117	91	142	Income	73	76	67
Expenditure	125	110	118	Expenditure	72	64	75
Net gain (loss)	(8)	(19)	24	Net gain (loss)	1	12	(8)
Significant 'One Off' Items included above							
Bequests and Legacies	-	10	50	Bequests and Legacies		10	
Grants	7	10	6	Grants			
Parish Share	43	45	44	Parish Share		40	40

HTP Assets as at end 2021	General and Designated	Restricted and Endowment	Total	SMTG Assets as at end 2021	General and Designated	Restricted and Endowment	Total
Cash and Banks	30		30	Cash and Banks	12		12
Investments	42	573	615	Investments	27		27
Total			645	Total			38

Please see attachment for further details of both churches' most recent accounts.

THE PENN TRUST

The Trust Deed covers activities in support of the maintenance and upkeep of Holy Trinity Church Penn, the provision and maintenance of residential premises for deserving persons and such other charitable purposes as the Trustees shall think proper. The Trustees also administer the Church Heritage Fund whose object is to provide a permanent endowment for the repair and restoration of the Parish Church. Accumulated income is available to the PCC for eligible purposes provided they are formally requested and agreed by the Trustees. The trustees are independent of the church and the Trust is not part of the Vicar's remit.



The Penn Trust also owns Penn Mead which has 8 flats with a communal garden opposite Holy Trinity Church. Preference is given for persons over 55 years, preferably with a local connection in or near the United Benefice of Holy Trinity, Penn and St. Margaret's Tylers Green. The daily administration has been devolved to Paradigm Housing.



THE VICARAGE

Conveniently located half-way between the two churches, The Vicarage is about half-a-mile from either and provides a delightful family home. It is a substantial and attractive, detached, brick-built house from the 1920s, in a lovely location with outstanding views to the rear of the rolling Chilterns countryside.

The property was completely renovated in the early 2000s and will be refurbished, redecorated and re-carpeted throughout. It is fitted with double glazed windows and has gas-fired central heating and hot water system. Roof insulation will be increased to 300mm thick.

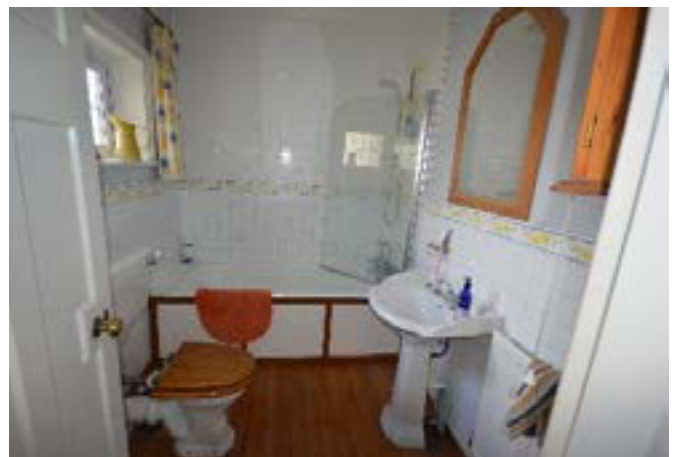
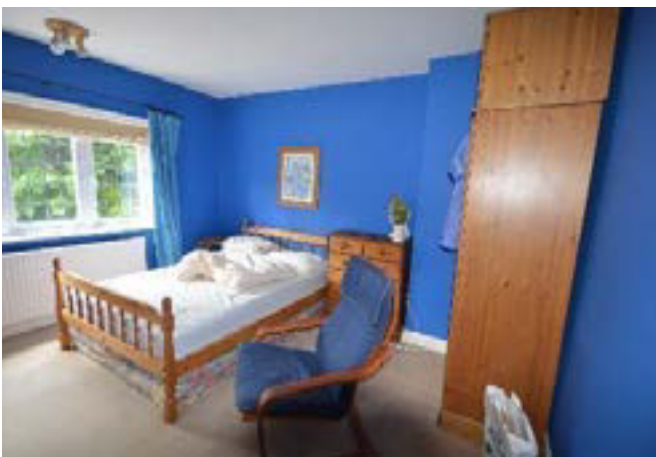
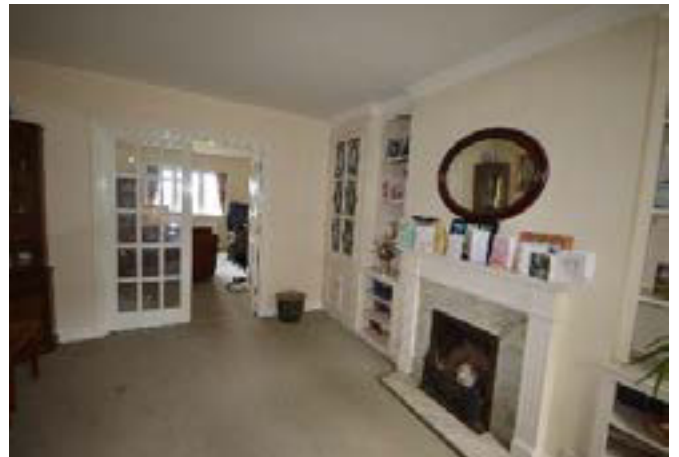


THE VICARAGE

Downstairs are 3 reception rooms – a lounge with patio doors onto the rear garden with views, a good-sized dining room (casement doors to living room), a spacious study, eat-in kitchen with door to garden and cloakroom with shower. The kitchen and utility room will be completely refurbished by the Diocese before occupation by the new incumbent.

Upstairs are 4 bedrooms, the master with fitted wardrobes and ensuite, a family bathroom and 3 further, double, bedrooms.

There is ample driveway parking to the front, plus a garage. Behind the house is a large, pretty, garden with outbuildings.



OTHER BUILDINGS



Holy Trinity Church Hall

The hall is used by Holy Trinity Church for various activities in the life of the church including PCC meetings and ministry team meetings. The hall is also rented out to local community groups as well as for children's parties, a rock group practice and by the local district council for parish, district and constituency elections. There is one large hall which can be subdivided and one smaller room (the North Room) together with toilet facilities (disabled included) and a modern kitchen. The Benefice office is housed on the first floor.

The civil Penn Parish has purpose-built offices to the rear of the hall for use by the Parish Clerk, and they also use the hall for their council meetings.



St. Margaret's Parish Rooms

The building comprises of a main hall, small hall, office, kitchen and toilets at one end with the Sanctuary at the opposite end, with drinks facilities, seating and small office on an upper floor. The Parish Rooms were primarily for use as a Sunday school but also for "any other purpose likely in the opinion of the Trustees to improve the religious moral and social conditions of the inhabitants of the District". The building is maintained in good working order, and over recent years the flooring, toilets, flat roof, lighting and the boiler have been replaced. Income is generated with the hire of the main hall to a local nursery business and ballet school, which provide a service for the local community. The Parish Rooms have strong links with St. Margaret's with a variety of church activities being held in the rooms, including Sunday school, coffee after the services, coffee morning in the week, craft and art groups as well as events such as 'Open gardens', Pancake parties, sharing lunches and Alpha.

The Parish Rooms charity is run by three trustees which have village/ church links and based on the original conveyance the incumbent is a trustee and chair of this committee.



St. Margaret's has a small basement accessed via some external stone steps. The basement with its stone floor and minimal shelving houses the gas boiler and provides storage for occasional use items. The shed, the name does not match what this building looks like, with its flint walls, tiled gable roof and window, is situated in the left hand corner of the graveyard at St. Margaret's church. The shed is used for storage with flower arranging and Christmas decorations being stored here.

With 12 parishes or benefices made up of 31 churches, Amersham Deanery is one of the largest and almost certainly the wealthiest deanery in Oxford Diocese. In addition to the four big towns of Amersham, Beaconsfield, Chesham and Chalfont St. Peter/Gerrards Cross, there are smaller rural villages. While many households could be described as 'comfortable' there are patches of significantly less prosperous housing.

There is an excellent spirit of co-operation between all the parishes in the deanery, and the clergy chapter is strong and meets four times a year. The Area Dean provides pastoral care and supervision for incumbents and can be relied on to provide a listening ear, help and advice, whenever needed.

Deanery Synod meets three or four times a year, and elects 3 clergy and 6 lay members to the Diocesan Synod. The Deanery website can be found at <http://www.amershamdeanery.org.uk/index.html>

Area Dean & Deanery Lay Chair
Revd. Peggy Ludlow, Lawrence Tebboth

The Diocese of Oxford and the Archdeaconry of Buckingham

The Diocese of Oxford serves the mission of the Church in Buckinghamshire, Berkshire and Oxfordshire. The Diocese comprises more than 600 parishes, with over 800 churches, serving a diverse population of more than 2 million people located in all types of settings.

Due to the size and complexity of the Diocese, we have three Area Bishops who exercise considerable strategic and pastoral oversight for their Areas. The Bishop of Buckingham is the Rt Rev'd Alan Wilson who has been the Area Bishop since 2003. The Archdeacon of Buckingham is Ven Guy Elsmore who has been in post since 2016. In September 2020, Revd Canon Chris Bull was appointed Associate Archdeacon of Buckingham.

Through prayer, listening and discernment a [common vision has emerged for the Diocese of Oxford](#). The vision is based on the qualities described in The Beatitudes and addresses what kind of church we are called to be:

**a more Christ-like Church for the sake of God's world:
contemplative, compassionate, courageous.**

Our Common Vision continues to emerge as we identify together areas of our common life where we believe God is calling to focus. The [diocesan focal areas](#) are not a description of everything we do, but these priorities are being supported centrally by resources, training, conferences, workshops, and much more. The diocese is inviting benefices and their clergy to share a vision rather than demanding a response, motivated by hope not driven by anxiety, and thereby to flourish in their ministry. It is hoped that clergy appointed into the Archdeaconry of Buckingham will want to commit to this vision and encourage their benefice to share in becoming a more Christ-like church for the sake of God's world.